



OMS Conventional Surface Wellhead System

Product Brochure

OMS Conventional Surface Wellhead System

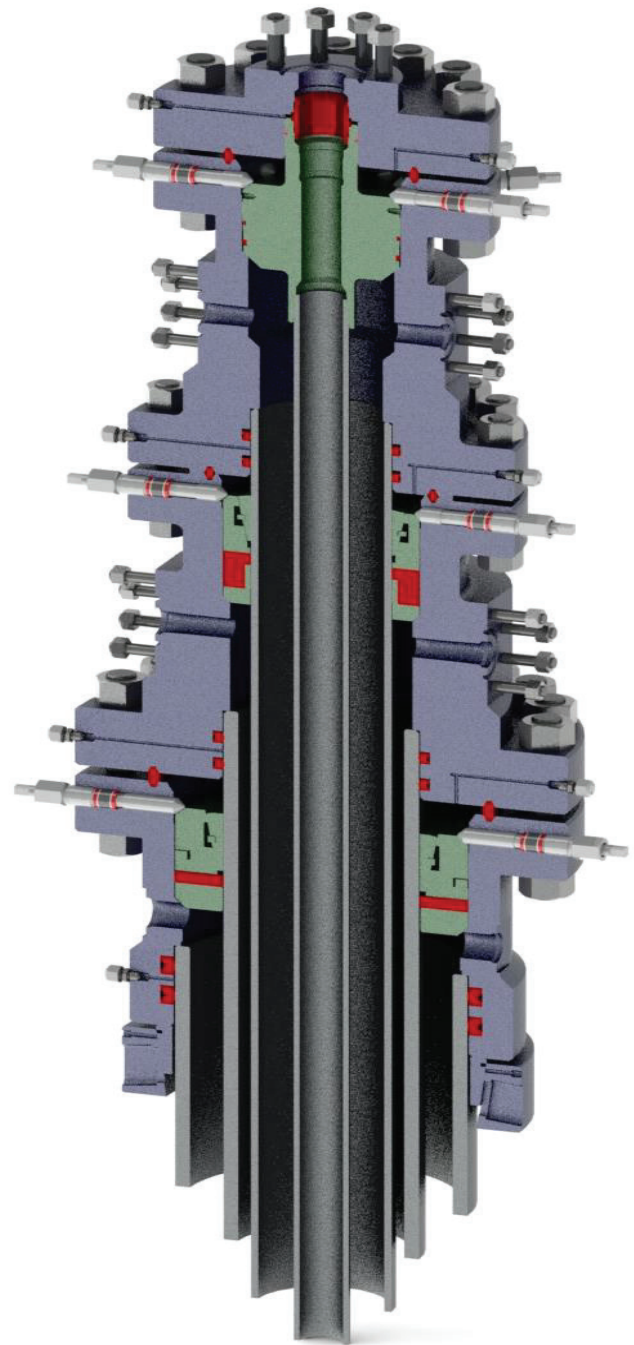
OMS Conventional Surface Wellhead System provides cost effective and reliable wellhead system in a variety of drilling and completion applications. The usage of standard designs and components offers the interchangeability and flexibility for a wide range of applications and service conditions.

OMS provides two wellhead systems, the OMS-22 and the OMS-29, for the Casing Head Housings and the Casing Head Spools. The OMS-22 wellhead system is offered for applications with working pressure of 5,000 Psi (34,5 MPa) or lower. The OMS-29 wellhead system is offered where High Pressure and High Temperature system are required. It caters for working pressure up to 15,000 Psi (103,5 MPa) and temperature up to 350° Fahrenheit (177° Celsius).

For the final stage wellhead completion, OMS offers three systems to cater for different applications. The OMS-T Wellhead System provides a conventional Tubing Head Spool and Hanger design with elastomeric sealing on the Tubing Hanger Body. The OMS-TA Wellhead System comes with an aligning pin for dual completion and other eccentric hanger completion (e.g. ESP completion, Heater String Injection). Both, the OMS-T and OMS-TA wellhead systems, can be offered with a full metal-to-metal seal on the flow bore.

In a severe and harsh environment, the OMS-TM Wellhead System provides a full metal-to-metal seal completion on the Tubing Hanger body. The OMS-TM Wellhead System is most suitable for gas-tight, High Pressure and High Temperature (HPHT) applications, with pressure rating up to 20,000 Psi (138,0 MPa) and temperature rating up to 450° Fahrenheit (232° Celsius).

Selecting a suitable and cost effective wellhead system is critical in all drilling operations and completions. OMS offers a complete line of Conventional Wellhead Systems that meets or exceeds API Specification 6A requirements. For customized wellhead solutions not covered in this brochure, kindly contact an OMS representative.

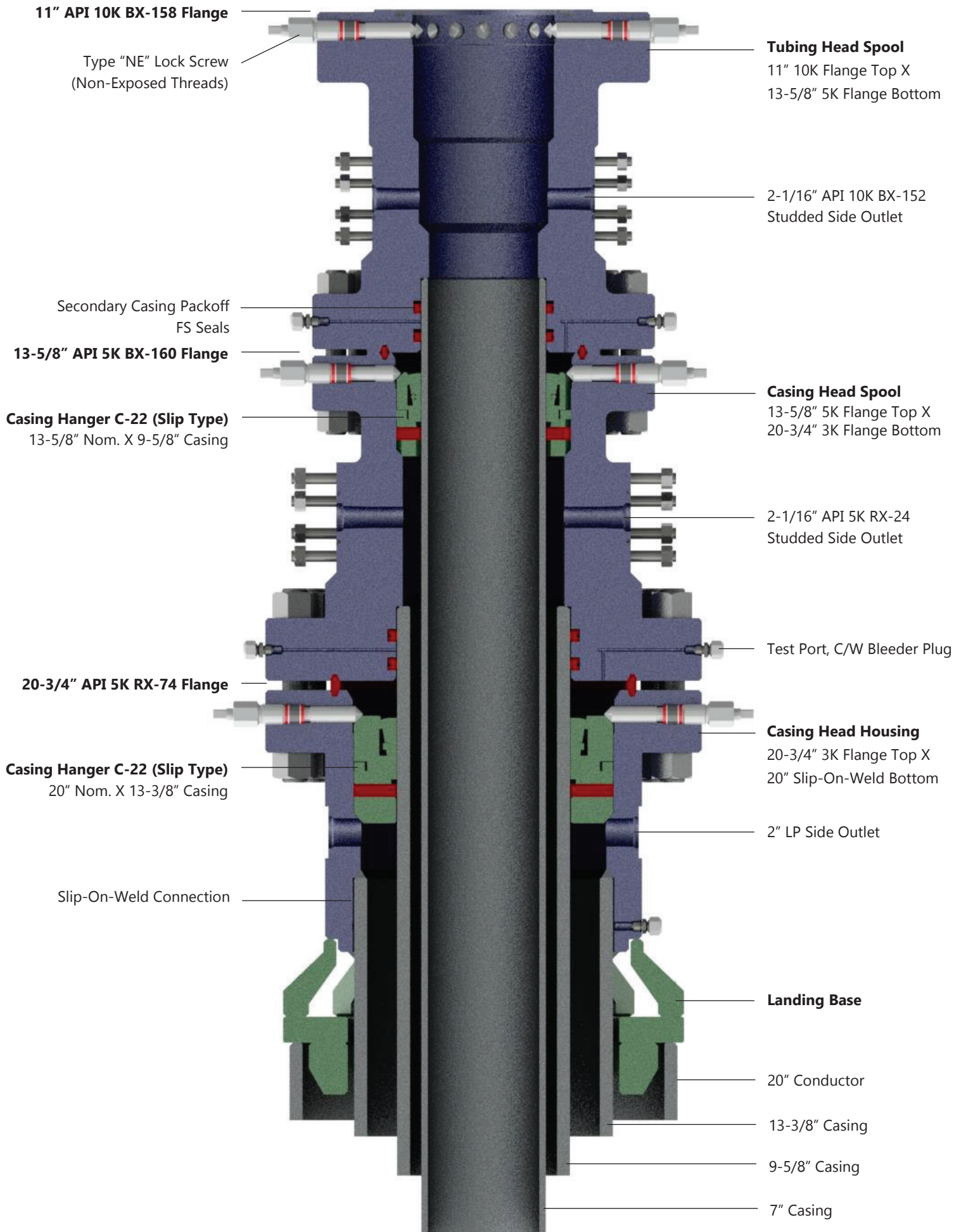


WELLHEAD SYSTEM

System Name	Application Type	Maximum Working Pressure	Hanger Seal Type	Bottom Secondary Packoff
OMS-22	CHH CHS	5,000 Psi (34,5 MPa)	Elastomeric	Elastomeric
OMS-29	CHH CHS	15,000 Psi (103,5 MPa)	Elastomeric Metal-to-Metal	Elastomeric Metal-to-Metal
OMS-T	THS	10,000 Psi (69,0 MPa)	Elastomeric (Body) Metal-to-Metal (Bore)	Elastomeric Metal-to-Metal
OMS-TA	THS	10,000 Psi (69,0 MPa)	Elastomeric (Body) Metal-to-Metal (Bore)	Elastomeric Metal-to-Metal
OMS-TM	THS	20,000 Psi (138,0 MPa)	Metal-to-Metal	Elastomeric Metal-to-Metal

CHH – Casing Head Housing CHS – Casing Head Spool THS – Tubing Head Spool

OMS Conventional Surface Wellhead System



Casing Head Housings and Spools

OMS-22 and OMS-29

PRODUCT FEATURES

The OMS-22 and OMS-29 wellhead systems feature a field-proven bowl design with a 45° landing shoulder. The Casing Head Housings seal off the surface casing by means of Slip-On-Weld (SOW), Slip-On-Lock (SOL), or threaded connection. The Casing Head Spools seal off the subsequent casing by energizing the secondary packoff seals. Both Casing Head Housings and Spools can be offered with standard API Spec. 6A Flange or API Spec. 16A Hub/Clamp connection.

Bowl Designs

The OMS-22 and OMS-29 wellhead systems come with a straight bowl design with a 45° landing shoulder to support the hanger/casing load and the BOP test pressure load. The OMS-29 is designed with a deeper bowl profile to cater for high working pressure and heavy casing scenarios.

Lock Screw Configurations

Three different configurations are available for the OMS-22 and OMS-29 wellhead systems. Lock Screw threads are not exposed to well-bore. This prevents any dirt built up on threads that can cause lock screw stop functioning.

Bowl Type	Lock Screws Configuration	Remark
OMS-22 OMS-29	No lock screw	Standard offering
OMS-22-BP OMS-29-BP	Two lock screws 180° apart	Provide positive lockdowns on bowl protector during drilling
OMS-22-L OMS-29-L	Full set of lock screws	Provide full lockdown on bowl protector and casing hanger

Casing Slip Hangers

The OMS-22 bowl profile is compatible with C-21 and C-22 Casing Slip Hangers. The OMS-29 bowl profile is compatible with C-21 and C-29 Casing Slip Hangers. Mandrel type hangers are available if full BOP control is required on hanger installation.

Side Outlets

Side outlets are available in female Line Pipe (LP) threads and studded connections. Studded connections come with valve removal threads.

Landing Bases

Two types of landing base are available, single piece and split. Landing Bases are offered when load transfer to conductor or ground is required.

Working Pressure: Up to 15,000 Psi (103,5 MPa)

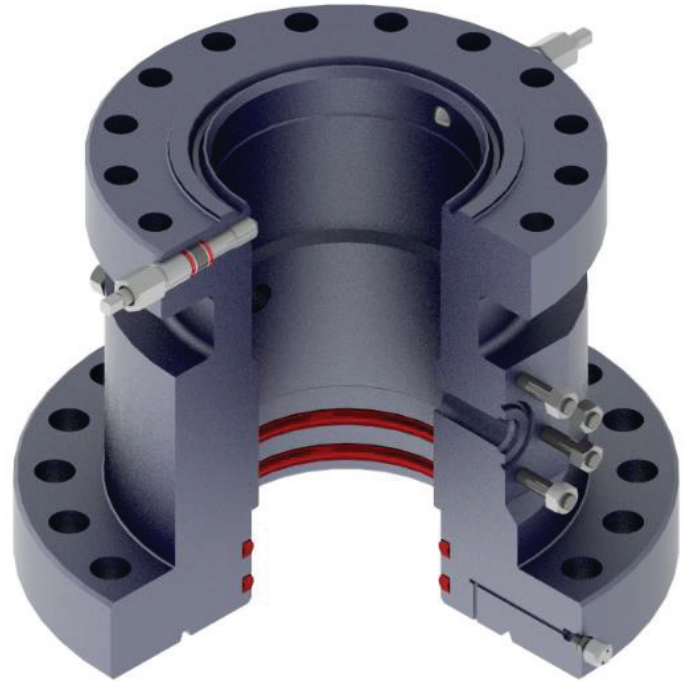
Operating Temperature: -20 to 250°F (-29 to 121°C)

Material Class: AA BB CC DD* EE* FF* HH*

Product Specification Level: PSL 1, 2, 3, 3G

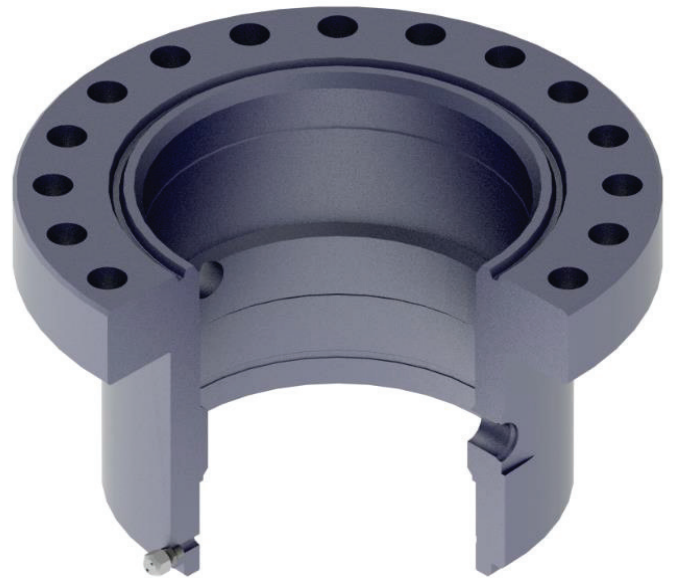
Performance Requirement: PR2

* As defined by ISO 15156 (all parts) (NACE MR0175; see clause 2)



Casing Head Spools

OMS-29-BP with Flange Top x Bottom Connections and Studded Side Outlets

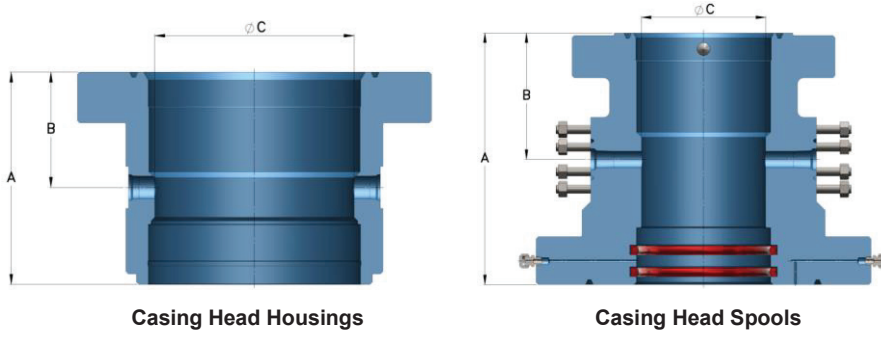


Casing Head Housings

OMS-22 with Flange Top x Slip-on-Weld Bottom Connections and Threaded Outlets

Casing Head Housings and Spools

OMS-22 and OMS-29 Standard Housings and Spools Dimensions



A = Nominal Overall Height
 B = Height Flange Top to Outlet
 C = Minimum Bore

NOTE

1. All dimensions are for reference only. Finished products may vary.
2. Studded Side Outlets (SSO) are the standard offering for spools.
3. SSO pressure rating equates top flange connection rating.

Casing Head Housings

Top Flange		Bottom Casing Size (inches)	Side Outlets	Dimension (inches)			Dimensions (mm)		
Nominal Size (inches)	Working Pressure (Psi MPa)			A	B	C	A	B	C
11	3,000 20,7	8-5/8	2" Line Pipe	17.25	9.12	8.00	438	232	203
11	3,000 20,7	8-5/8	2-1/16" 5K SSO	20.50	12.44	8.00	521	316	203
11	3,000 20,7	9-5/8	2" Line Pipe	17.25	9.12	9.00	438	232	229
11	3,000 20,7	9-5/8	2-1/16" 5K SSO	20.50	12.44	9.00	521	316	229
11	3,000 20,7	10-3/4	2" Line Pipe	17.25	9.12	10.00	438	232	254
11	3,000 20,7	10-3/4	2-1/16" 5K SSO	20.50	12.44	10.00	521	316	254
11	5,000 34,5	8-5/8	2" Line Pipe	19.25	12.94	8.00	495	329	203
11	5,000 34,5	8-5/8	2-1/16" 5K SSO	19.25	12.94	8.00	495	329	203
11	5,000 34,5	9-5/8	2" Line Pipe	19.25	12.94	9.00	495	329	229
11	5,000 34,5	9-5/8	2-1/16" 5K SSO	19.25	12.94	9.00	495	329	229
11	5,000 34,5	10-3/4	2" Line Pipe	19.25	12.94	10.00	495	329	254
11	5,000 34,5	10-3/4	2-1/16" 5K SSO	19.25	12.94	10.00	495	329	254
13-5/8	3,000 20,7	11-3/4	2" Line Pipe	18.00	11.25	11.00	460	279	279
13-5/8	3,000 20,7	11-3/4	2-1/16" 5K SSO	18.25	11.25	11.00	473	279	279
13-5/8	3,000 20,7	13-3/8	2" Line Pipe	18.00	11.25	12.50	460	279	318
13-5/8	3,000 20,7	13-3/8	2-1/16" 5K SSO	18.25	11.25	12.50	473	279	318
13-5/8	5,000 34,5	11-3/4	2" Line Pipe	20.50	12.88	11.00	518	327	279
13-5/8	5,000 34,5	11-3/4	2-1/16" 5K SSO	20.50	12.88	11.00	518	327	279
13-5/8	5,000 34,5	13-3/8	2" Line Pipe	20.50	12.88	12.50	518	327	318
13-5/8	5,000 34,5	13-3/8	2-1/16" 5K SSO	20.50	12.88	12.50	518	327	318
21-1/4	2,000 13,8	18-5/8	2" Line Pipe	18.75	11.88	18.00	476	302	457
21-1/4	2,000 13,8	20	2" Line Pipe	19.50	11.88	19.00	495	302	483
20-3/4	3,000 20,7	18-5/8	2" Line Pipe	20.25	12.50	18.00	514	318	457
20-3/4	3,000 20,7	18-5/8	2-1/16" 5K SSO	20.75	12.50	18.00	527	318	457
20-3/4	3,000 20,7	20	2" Line Pipe	20.25	12.50	19.00	514	318	483
20-3/4	3,000 20,7	20	2-1/16" 5K SSO	20.75	12.50	19.00	527	318	483
21-1/4	5,000 34,5	18-5/8	2-1/16" 5K SSO	24.25	16.00	18.00	616	406	457
21-1/4	5,000 34,5	20	2-1/16" 5K SSO	24.25	16.00	19.00	438	232	203

Casing Head Spools

Top Flange		Bottom Flange		Dimension (inches)			Dimensions (mm)		
Nominal Size (inches)	Working Pressure (Psi MPa)	Nominal Size (inches)	Working Pressure (Psi MPa)	A	B	C	A	B	C
11	3,000 20,7	11	3,000 20,7	22.38	10.25	8.00	568	260	203
11	3,000 20,7	13-5/8	3,000 20,7	20.75	12.25	9.00	527	311	229
11	5,000 34,5	11	3,000 20,7	25.25	13.50	8.00	641	343	203
11	5,000 34,5	13-5/8	3,000 20,7	26.12	13.50	9.00	663	343	229
11	5,000 34,5	11	5,000 34,5	26.38	13.50	8.00	670	343	203
11	5,000 34,5	13-5/8	5,000 34,5	26.38	13.50	9.00	670	343	229
11	10,000 69,0	11	5,000 34,5	27.50	14.75	8.00	699	375	203
11	10,000 69,0	13-5/8	5,000 34,5	26.50	14.75	9.00	673	375	229
11	10,000 69,0	11	10,000 69,0	31.25	14.75	8.00	794	375	203
11	10,000 69,0	13-5/8	10,000 69,0	30.12	14.75	9.00	765	375	229
13-5/8	3,000 20,7	21-1/4	2,000 13,8	25.25	12.25	12.50	641	311	318
13-5/8	3,000 20,7	20-3/4	3,000 20,7	26.25	12.25	12.50	667	311	318
13-5/8	5,000 34,5	21-1/4	2,000 13,8	25.38	14.38	12.50	645	365	318
13-5/8	5,000 34,5	20-3/4	3,000 20,7	25.38	14.38	12.50	645	365	318
13-5/8	5,000 34,5	13-5/8	5,000 34,5	28.88	14.38	9.00	734	365	229
13-5/8	5,000 34,5	21-1/4	5,000 34,5	27.50	14.38	12.50	699	365	318
13-5/8	10,000 69,0	21-1/4	5,000 34,5	33.50	16.00	12.50	851	406	318

Tubing Head Spools

OMS-T, OMS-TA, and OMS-TM

PRODUCT FEATURES

The OMS-T and OMS-TA Tubing Head Spools feature a field-proven bowl design with 45° landing shoulder. The OMS-TA Spools come with aligning pins for dual-hanger and eccentric hanger completions. Both OMS-T and OMS-TA Tubing Head Spools are available from 2,000 to 10,000 Psi Working Pressure.

The OMS-TM Tubing Head Spools offers a full metal-to-metal completion by providing a controlled tapered profile on hanger/bowl. The metal-to-metal seal is energized by either tubing weight, lock screw torque, or combination of both. The OMS-TM Tubing Head Spools are available from 5,000 to 20,000 Psi Working Pressure.

All Tubing Head Spools are offered with standard API Spec. 6A Flange or API Spec. 16A Hub/Clamp connection.

Bowl Designs

The OMS-T, OMS-TA, and OMS-TM Tubing Head Spools bowl design come with a 45° landing shoulder to support the hanger/tubing load and the BOP test pressure load.

Metal-to-Metal Completions

The OMC Tubing Head Spools come with a controlled tapered bowl for a true metal-to-metal seal completion for the most demanding completions.

Tubing Hanger Completions

Different types of Tubing Hanger are available to cater for various completion scenarios.

Completion Type	Maximum WP (Psi MPa)	Tubing Head Spools		
		OMS-T	OMS-TA	OMS-TM
Single / Smart Well (up to 8 control lines)	10,000 69,5	•		
Dual (up to 8 control lines)	10,000 69,5		•	
ESP, IOR/EOR, Eccentric	10,000 69,5		•	
Frac	20,000 138,0	•		•
HPHT, Gas Well	20,000 138,0			•

Lock Screw Configurations

All Tubing Head Spools come with full set of lock screws capable of taking a full pressure load across the tubing hanger seal area. Lock Screw threads are not exposed to well-bore. This prevents any dirt built up on threads that can cause lock screw stop functioning.

Working Pressure: Up to 20,000 Psi (138,0 MPa)

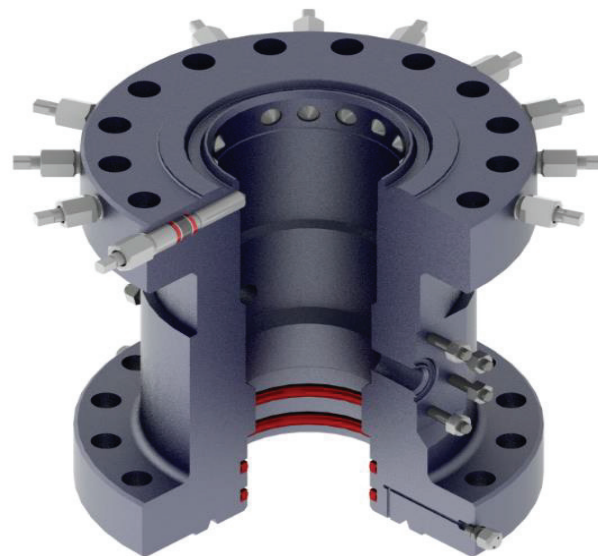
Operating Temperature: -50 to 350°F (-46 to 180°C)

Material Class: AA BB CC DD* EE* FF* HH*

Product Specification Level: PSL 1, 2, 3, 3G, 4

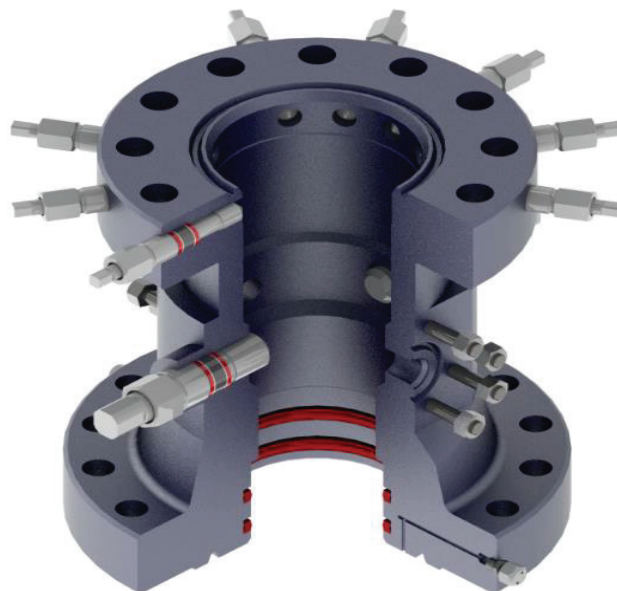
Performance Requirement: PR2

* As defined by ISO 15156 (all parts) (NACE MR0175; see clause 2)



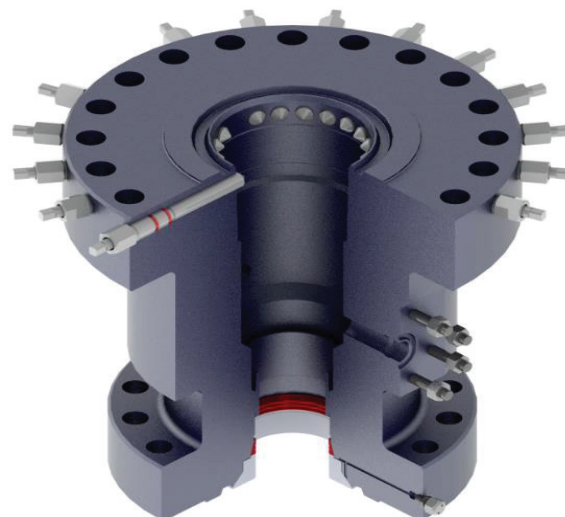
OMS-T Tubing Head Spools

Flange Connections Top x Bottom and Studded Side Outlets



OMS-TA Tubing Head Spools

Flange Connections Top x Bottom and Studded Side Outlets
With Aligning Pins

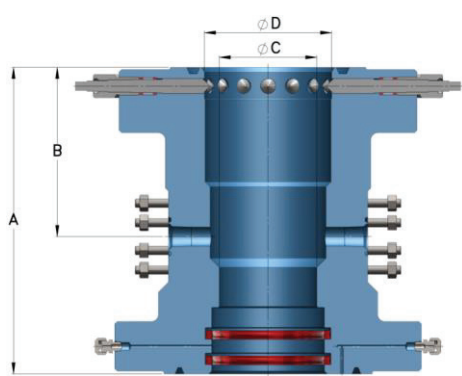


OMS-TM Tubing Head Spools

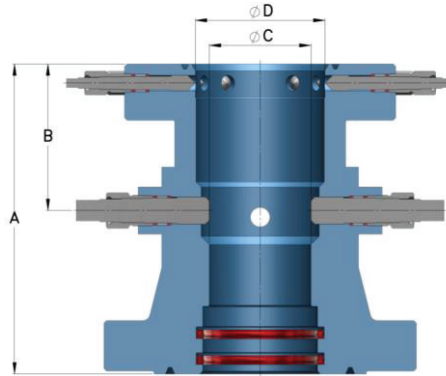
Flange Connections Top x Bottom and Studded Side Outlets
With Controlled Tapered Bowl

Tubing Head Spools

OMS-T, OMS-TA, and OMS-TM



OMS-T and OMS-TC Tubing Head Spools



OMS-TA Tubing Head Spools

- A = Nominal Overall Height
- B = Height Flange Top to Outlet
- C = Minimum Bore
- D = Height Flange Top to Aligning Pin

NOTE

1. All dimensions are for reference only. Finished products may vary.
2. Studded Side Outlets (SSO) are the standard offering for spools.
3. SSO pressure rating equates top flange connection rating.

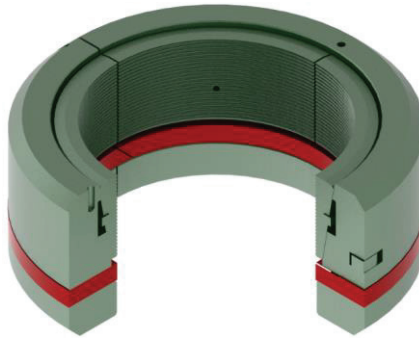
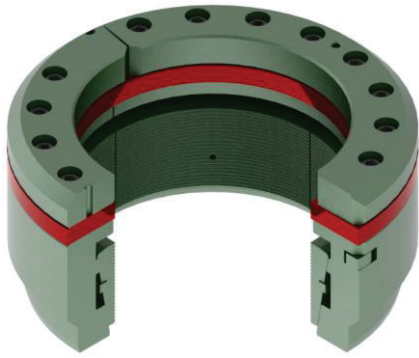
Tubing Head Spools

Top Flange		Bottom Flange		Dimension (inches)				Dimension (mm)			
Nominal Size (inches)	Working Pressure (Psi MPa)	Nominal Size (inches)	Working Pressure (Psi MPa)	A	B	C	D*	A	B	C	D*
7-1/16	3,000 20,7	11	3,000 20,7	20.75	11.00	6.38	-	527	279	162	-
7-1/16	5,000 34,5	11	3,000 20,7	22.00	11.50	6.38	-	559	292	162	-
7-1/16	5,000 34,5	11	5,000 34,5	25.00	11.75	6.38	-	635	298	162	-
7-1/16	10,000 69,0	11	5,000 34,5	25.00	11.88	6.38	-	635	302	162	-
7-1/16	10,000 69,0	11	10,000 69,0	24.88	11.50	6.38	-	632	292	162	-
7-1/16	15,000 103,5	11	10,000 69,0	25.50	12.12	6.31	-	648	308	160	-
7-1/16	15,000 103,5	11	15,000 103,5	28.50	12.25	6.31	-	724	311	160	-
7-1/16	20,000 138,0	11	15,000 103,5	30.50	14.00	6.25	-	775	356	159	-
9	10,000 69,0	11	5,000 34,5	27.00	13.50	7.25	-	686	343	184	-
9	10,000 69,0	13-5/8	5,000 34,5	27.50	13.50	7.25	-	699	343	184	-
9	10,000 69,0	11	10,000 69,0	27.88	13.50	7.25	-	708	343	184	-
9	10,000 69,0	13-5/8	10,000 69,0	29.00	13.50	7.25	-	737	343	184	-
9	15,000 103,5	11	10,000 69,0	30.50	15.50	7.25	-	775	394	184	-
9	15,000 103,5	13-5/8	10,000 69,0	32.00	15.50	7.25	-	813	394	184	-
11	3,000 20,7	11	3,000 20,7	22.38	10.12	8.00	7.88	568	257	203	200
11	3,000 20,7	13-5/8	3,000 20,7	20.75	9.94	9.00	7.88	527	252	229	200
11	5,000 34,5	11	3,000 20,7	22.50	13.00	8.00	7.88	572	330	203	200
11	5,000 34,5	13-5/8	3,000 20,7	26.75	14.56	9.00	7.88	679	370	229	200
11	5,000 34,5	11	5,000 34,5	26.12	12.88	8.00	7.88	663	327	203	200
11	5,000 34,5	13-5/8	5,000 34,5	26.31	13.50	9.00	7.88	668	343	229	200
11	10,000 69,0	11	5,000 34,5	27.50	13.06	8.00	7.88	699	332	203	200
11	10,000 69,0	13-5/8	5,000 34,5	29.25	14.88	9.00	7.88	743	378	229	200
11	10,000 69,0	11	10,000 69,0	31.25	15.38	8.00	7.88	794	391	203	200
11	10,000 69,0	13-5/8	10,000 69,0	31.50	15.38	9.00	7.88	800	391	229	200
11	15,000 103,5	11	10,000 69,0	32.00	16.18	8.00	-	813	411	203	-
11	15,000 103,5	13-5/8	10,000 69,0	32.75	16.18	9.00	-	832	411	229	-
11	15,000 103,5	11	15,000 103,5	33.38	16.18	8.00	-	848	411	203	-

* Applicable only for OMS-TA

Slip-Type Casing Hangers

C-21, C-22, and C-29



C-21 Slip Type Casing Hanger With Manual Sealing

- Light to medium casing weight
- A set of slips is energized by casing weight
- Supports up to 80% of casing joint strength
- No loose part: slips are bolted into place and wrap around casing
- The seal is manually energized by lock screw or cap screw
- Compatible for OMS-22 and OMS-29 Casing Head Housings and Spools

C-22 Slip Type Casing Hanger With Automatic Sealing

- Medium casing weight
- A set of slips and the seal are energized by casing weight
- Supports up to 80% of casing joint strength
- No loose part: slips are bolted into place and wrap around casing
- Lock screws is not required to set the slips or the seals
- Compatible for OMS-22 Casing Head Housings and Spools

C-29 Slip Type Casing Hanger With Automatic Sealing

- Medium to heavy casing weight
- All the features of C-22 Slip Type Casing Hanger
- Additional set of slips to distribute the casing load
- Special design is available for HPHT application
- Compatible for OMS-29 Casing Head Housings and Spools

Working Pressure:	5,000 Psi (69,0 MPa)
Operating Temperature:	0 to 250°F (-18 to 121°C)
Material Class:	AA, DD ¹
Product Specification Level:	PSL 3
Performance Requirement:	PR2

Working Pressure:	5,000 Psi (34,5 MPa)
Operating Temperature:	0 to 250°F (-18 to 121°C)
Material Class:	AA, DD ¹
Product Specification Level:	PSL 3
Performance Requirement:	PR2

Working Pressure:	15,000 Psi (103,5 MPa)
Operating Temperature:	0 to 350°F (-18 to 180°C)
Material Class:	AA, DD ¹
Product Specification Level:	PSL 3
Performance Requirement:	PR2

NOTE:

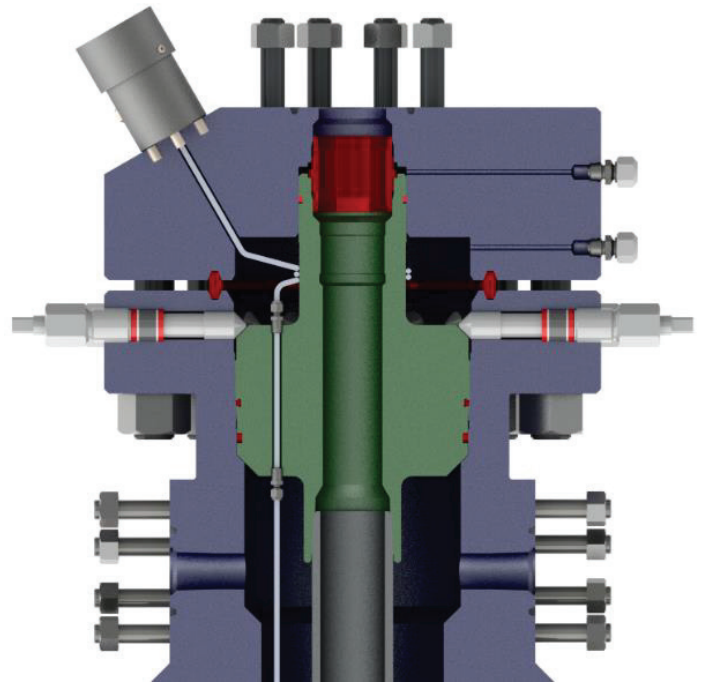
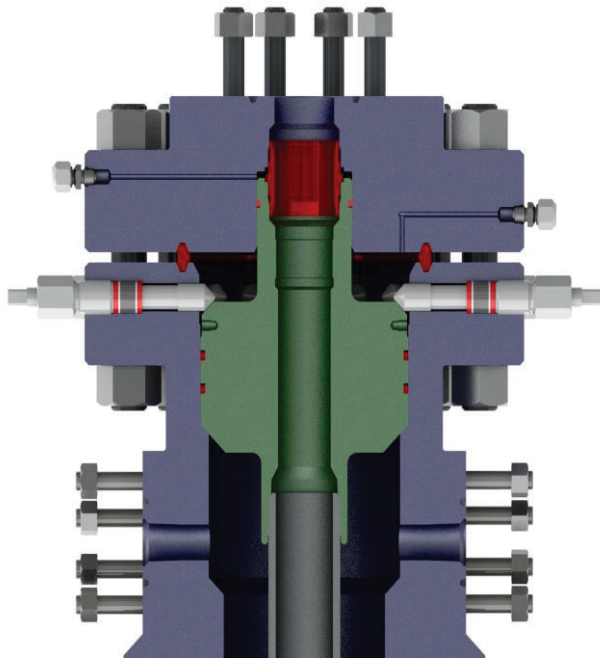
1. As defined by ISO 15156 (all parts) (NACE MR0175; see clause 2)
2. Standard offering for Slip Type Hangers comes with Temperature U, PSL 3 and PR 2 ratings.

Slip Type Casing Hanger Size

Bowl Nominal Size (inches)	Maximum Working Pressure (Psi Mpa)	Hanging Casing OD (inches)	C-21	C-22	C-29
11	5,000 34,5	4-1/2, 5, 5-1/2, 7, 7-5/8	•	•	
11	10,000 69,0	4-1/2, 5, 5-1/2, 7, 7-5/8			•
11	15,000 103,5	4-1/2, 5, 5-1/2, 7, 7-5/8			•
13-5/8	5,000 34,5	7, 7-5/8, 9-5/8, 9-7/8, 10-3/4	•	•	
13-5/8	10,000 69,0	7, 7-5/8, 9-5/8, 9-7/8, 10-3/4			•
21-1/4	2,000 13,8	13-3/8, 13-5/8, 16	•	•	
20-3/4	3,000 20,7	13-3/8, 13-5/8, 16	•	•	
21-1/4	5,000 34,5	13-3/8, 13-5/8, 16			•

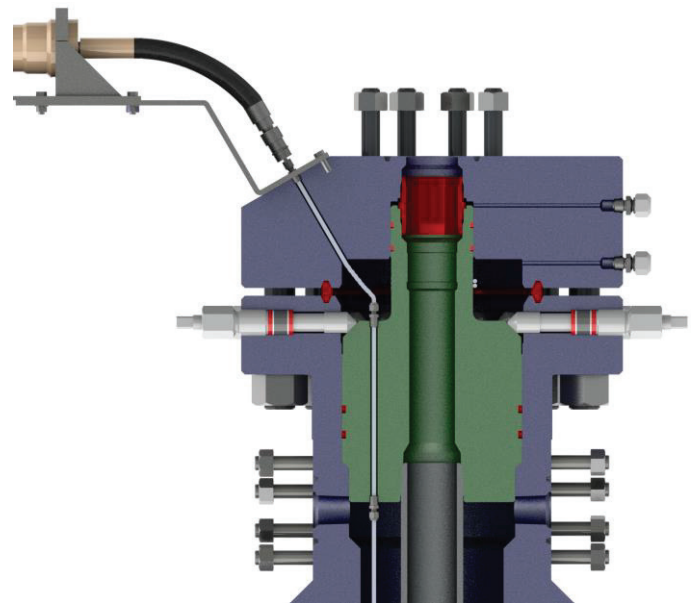
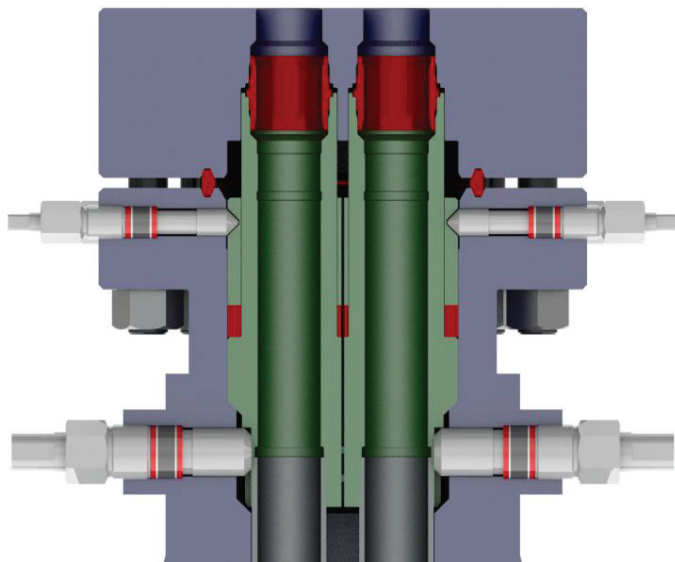
Tubing Hangers and Well Completions

OMS-T, OMS-TA, and OMS-TM



OMS-T Tubing Hanger	
Completion Type	Conventional - Single
Hanger Seals	Body: Elastomeric (S Seals) Neck: Elastomeric (S Seals)
Control Line (DHCV)	Non Continuous, 1/4" Tubing

OMS-TM Tubing Hanger	
Completion Type	Conventional – Single Metal-to Metal Sealing
Hanger Seals	Body: Metal-to-Metal (OMC Tapered Seal) Neck: Elastomeric + Metal-to-Metal (MSR Seals)
Control Line (DHCV)	Continuous, 1/4" Tubing with Termination Block



OMS-TA Dual Tubing Hanger	
Completion Type	Conventional - Dual
Hanger Seals	Body: Elastomeric (S Seals) Neck: Elastomeric + Metal-to-Metal (MSR Seals)
Control Line (DHCV)	Non Continuous, 1/4" Tubing

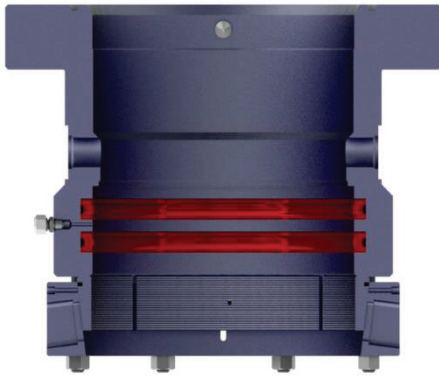
OMS-TA ESP Tubing Hanger	
Completion Type	ESP – Single
Hanger Seals	Body: Elastomeric (S Seals) Neck: Elastomeric + Metal-to-Metal (MSR Seals)
Control Line (DHCV)	Continuous, 1/4" Tubing with Termination Block

OTHER FEATURES:

1. Smart Completions with multiple control lines (up to 8EA lines) can be supplied, with size up to 3/8"OD.
2. OMT-ESP Tubing Hangers (eccentric design) with Mandrel Type Connector are available.

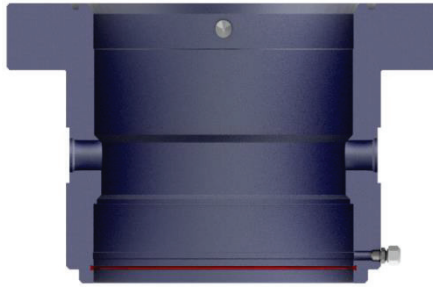
Auxiliary Equipment

CASING HEAD HOUSING BOTTOM CONNECTIONS



Slip-On-Lock (SOL)

- Simple slips mechanism, with external actuation
- FS or P seals, with test port in between
- Suitable for repetitive exploration program



Slip-on-Weld (SOW)

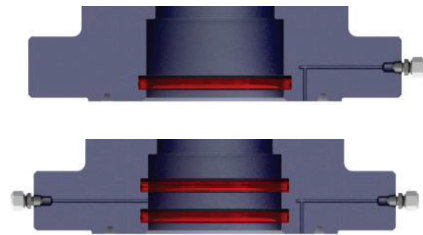
- Available for all casing sizes
- Test port in between to test weld connections.



Threaded Box Connection

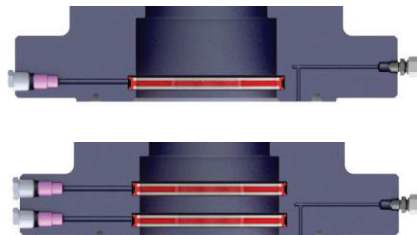
- Available for all casing sizes
- API or premium threads options

SECONDARY PACKOFF – BOTTOM OF CASING/TUBING HEAD SPOOLS



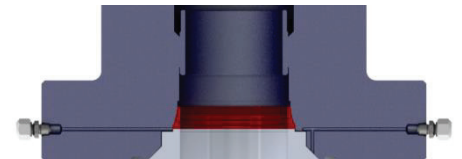
Single and Double "FS" Seals

- Radially energized seals
- With anti-extrusion metal coil
- One seal to cater for full casing tolerances
- Available for all casing sizes
- Available in NBR, HNBR and other elastomeric compounds
- Up to 10,000 Psi (69,0 MPa) WP



Single and Double "P" Seals

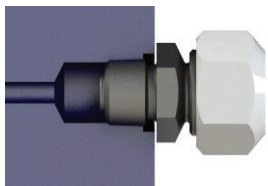
- Plastic packing energized seals
- With anti-extrusion ring
- Available for all casing sizes
- Available in NBR, HNBR and other elastomeric compounds
- Up to 10,000 Psi (69,0 MPa) WP



TWC Metal Seals

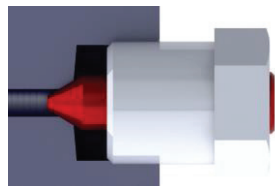
- Tapered wedge rough casing metal seals
- Compression energized seals
- Optional casing hold-down ring for high temperature application
- NACE MR0175 compliance
- Up to 20,000 Psi (138,0 MPa) WP

TEST, VENT, INJECTION PORTS AND LOCK SCREWS



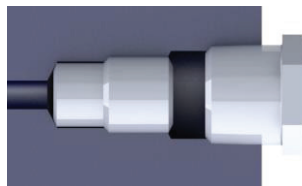
Standard Test/Vent Port

- 1/2" API Line Pipe (LP) threads
- Standard fittings with bleed-off feature
- Up to 10,000 Psi (69,0 MPa) WP



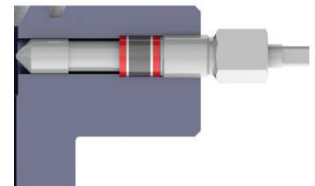
High Pressure Test/Vent Port

- API Type II Metal Seal Design (Autoclave)
- Standard fittings with bleed-off feature
- Up to 20,000 Psi (138,0 MPa) WP



Plastic Injection Port

- 1" NPT (external) and 1/2" NPT (internal) threads
- With internal check valve
- Up to 10,000 Psi (69,0 MPa) WP

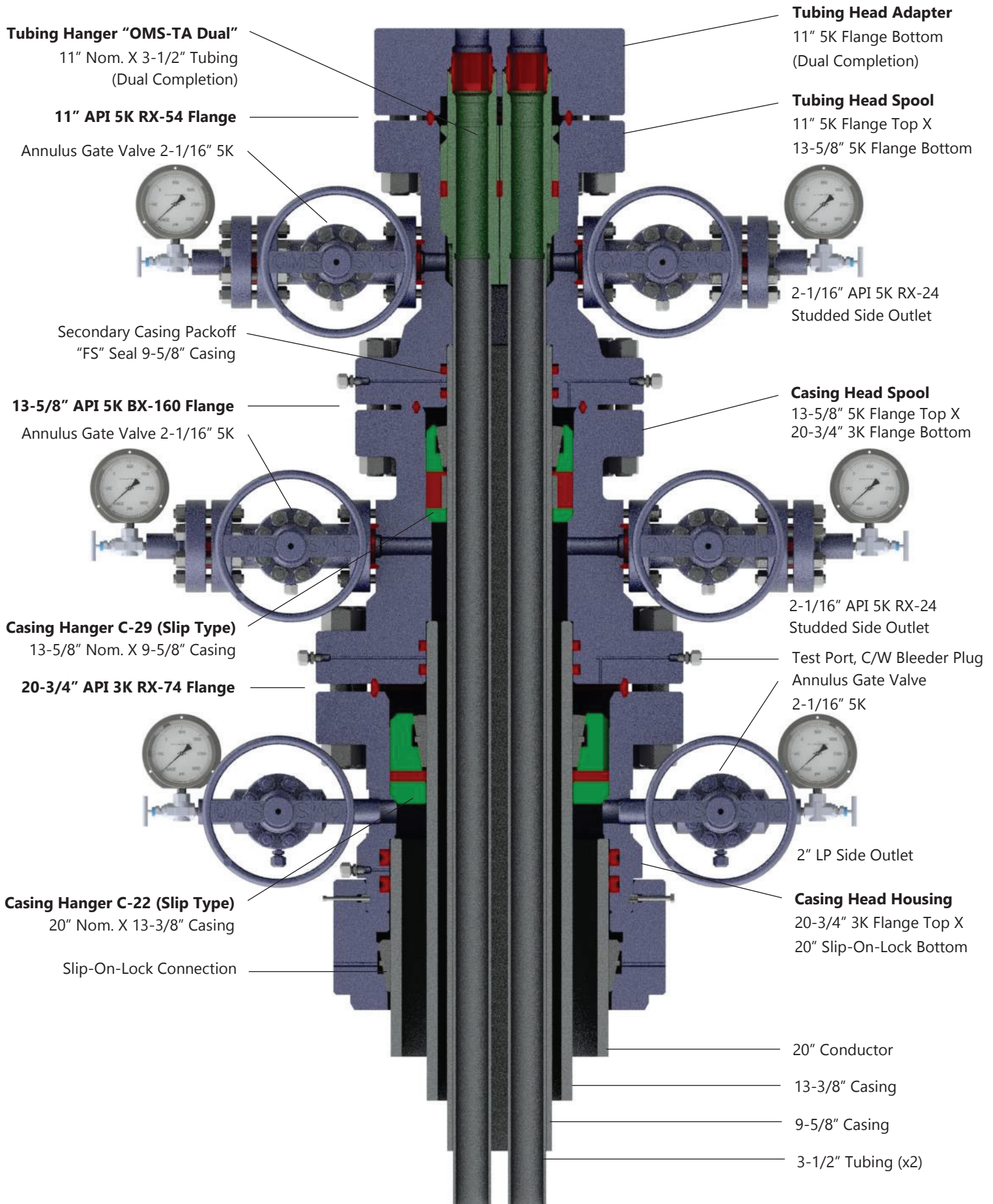


Lock Screws "NE"

- Field proven design, with non exposed threads
- Field replaceable
- Available with all Casing and Tubing Heads

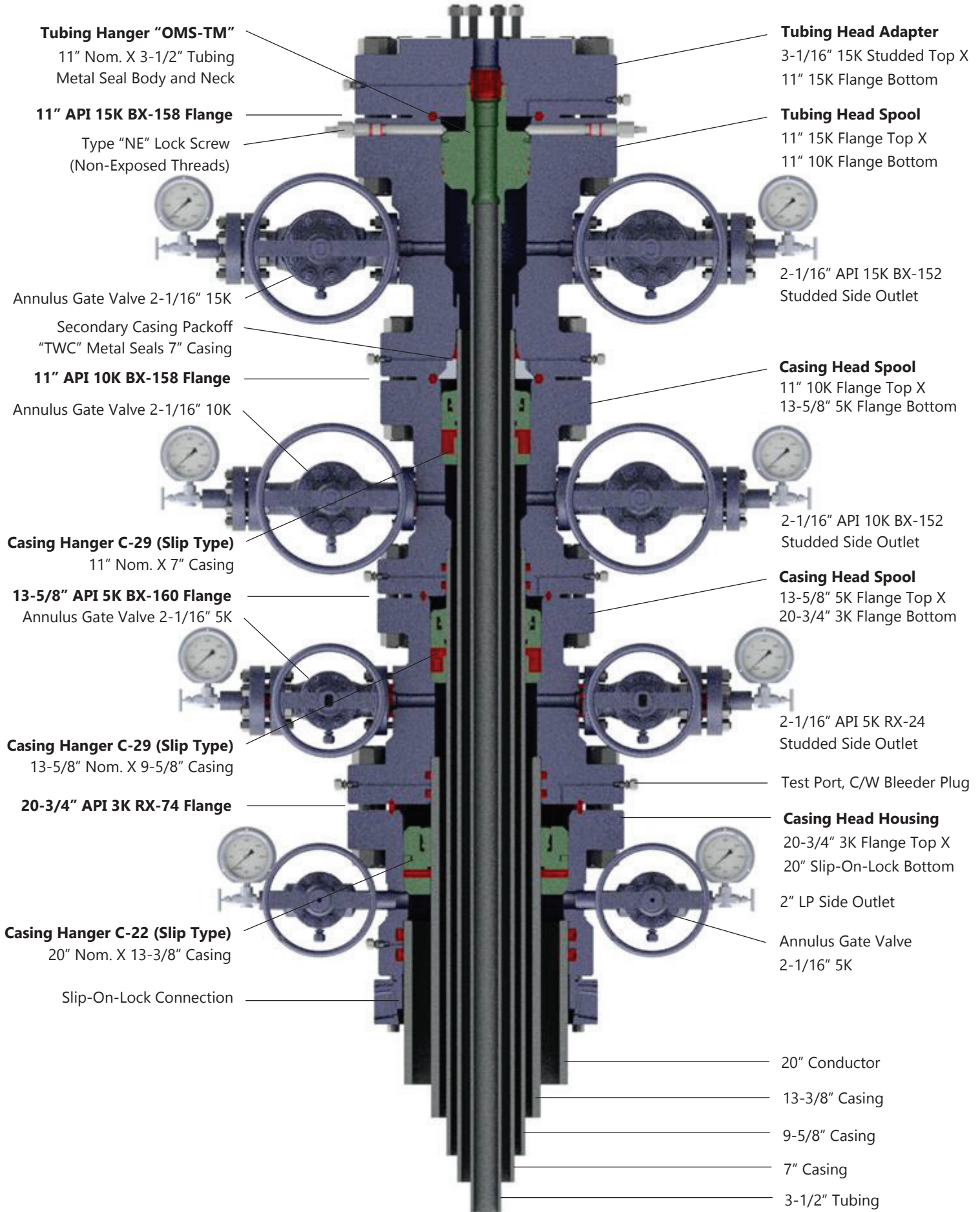
Typical Stackup: Dual Completion

Casing Program : 20" x 13-3/8" x 9-5/8" OD Casing x 3-1/2" Dual Tubing
Temperature rating : 0 to 250°F (-18 to 121°C)
Pressure Rating : 5,000 Psi (34,5 MPa) WP, also available in 10,000 Psi (69,0 MPa) WP



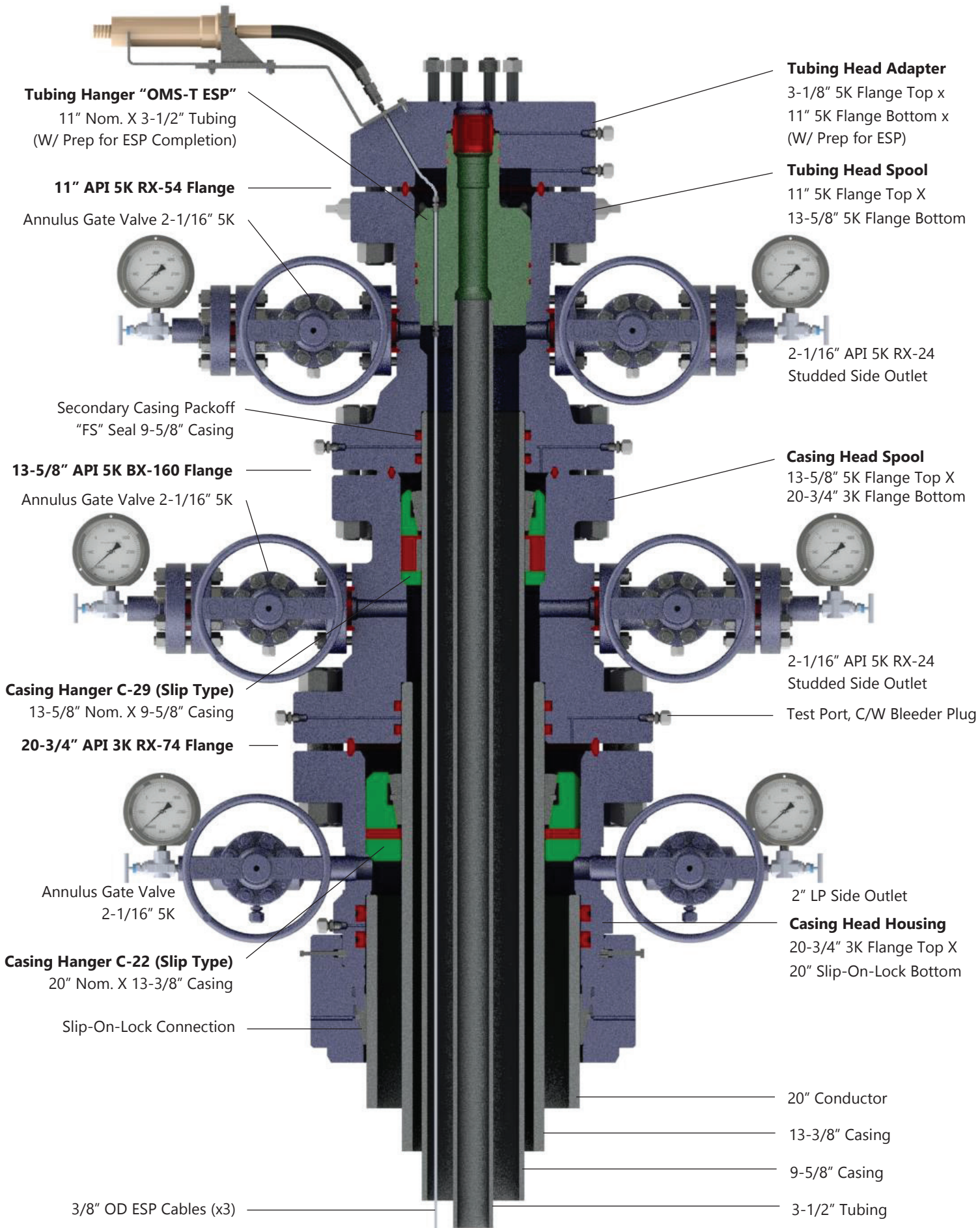
Typical Stackup: High Pressure High Temperature (HPHT) Completion

Casing Program : 20" x 13-3/8" x 9-5/8" x 7" OD Casing x 3-1/2" Tubing
Temperature rating : -50 to 350°F (-29 to 180°C)
Pressure Rating : 15,000 Psi (103,5 MPa) WP



Typical Stackup: ESP Well Completion

Casing Program: 20" x 13-3/8" x 9-5/8" OD Casing x 3-1/2" Tubing + ESP Completion
Temperature rating: 0 to 250°F (-18 to 121°C)
Pressure Rating: 5,000 Psi (34,5 MPa) WP



OMS Oilfield Services, established in 1976, is a leading oilfield services and manufacturing company. Our services include equipment repairs and remanufacturing, onsite/offsite inspection, welding, machining, and premium trading. We design and manufacture casing connectors, surface wellheads (both conventional and compact type), mudline suspension system and surface Christmas trees for onshore and offshore applications.

Our sales and services operations are located in the major oil centers in Asia Pacific and Middle East, comprising of 10 full-fledged facilities and 1 sales office (Kuala Lumpur).

Quality and Health, Safety, Security and Environmental (HSSE) policies are the critical enabling pillars in making OMS as a “Reliable Partner” of our employees and customers. At OMS we build our products and services with an ingrained Quality and Safety mind-set; and we achieved this through personal commitment driven by strong organizational leadership.

QUALITY POLICY

It is the policy of OMS Oilfield Services to continually strive to improve the effectiveness of our Quality System to the satisfaction of our customers through teamwork, processes, quality objectives and aligned goals.

We strive to accomplish our Quality Policy by

- Setting specific, measureable and achievable targets, through performance measures for our core processes.
- Conducting regular reviews of our policy to ensure that our goals and objectives are relevant to our business.
- Demonstrating the ability to consistently provide products, services and solutions that match industry standards and customer requirements.
- Planning our business contingencies through our quality management system and associated processes.

HEALTH, SAFETY, SECURITY AND ENVIRONMENTAL POLICY

We strive on our journey of Sustainable HSSE Excellence, continuously seeking opportunities to improve and build on our HSSE culture and Systems which aim to protect all employees, stakeholders and properties as well as preserve the environment.

To implement this policy OMS will:

- Ensure that occupational health, safety, security and environmental interests of our employees, clients and the public have priority over other business objectives.
- Comply with all applicable laws and regulations while aspiring to achieve or exceed the best industrial standards.
- Implement and maintain a systematic approach to HSSE management according to recognized standards.
- Identify HSSE risks and ensure that appropriate measures are in place to protect and preserve the environment, and to provide a safe and conducive workplace with a commitment to prevention of injury and ill health.
- Set and review regularly HSSE objectives and targets with a goal for continuous performance improvement.
- Foster an inclusive culture that empowers and recognizes everyone who actively engage in HSSE activities and programs.
- Openly recognize and communicate our HSSE performance with our employees and interested parties.

SERVICE AND AFTERMARKET

Whether its **equipment installation, inspection** or **maintenance services**, we pride ourselves in providing a total solution to our customer drilling and production campaign. Our well-equipped facilities in the regions are geared to provide **Repair and Refurbishment** needs and ready to mobilize within short notice. We also provide a complete range of **Rental Equipment**, including wellheads, flow trees, lubricator tools, and other auxiliaries tooling.





OMS Locations

Address and Contact Information

Singapore

OMS Oilfield Services Pte. Ltd.
No 10 Gul Circle, Jurong,
Singapore 629566
Republic of Singapore
Tel: +65 6861 2677
Fax: +65 6862 2719
Email: sing.admin@omsos.com

Indonesia (Jakarta)

PT. OMS Oilfield Services
Kp. Tegai RT. 023 RW. 007 No. 37
Desa Kembang Kuning,
Kec. Klapanunggal
Bogor 16820, West Java, Indonesia
Tel: +62 21 8249 9944
Fax: +62 21 8249 9848
Email: jakarta.general@omsos.com

Indonesia (Duri)

PT. OMS Oilfield Services
Jl. Lintas Duri Dumai
KM.07 RT.04 RW. 07,
Desa Pematang Obo, Kec. Bathin Solapan
Kabupaten Bengkalis,
Duri 28784, Riau - Indonesia
Tel & Fax: +62 765 56 0 178
Email: duri.admin@omsos.com

Indonesia (Balikpapan)

PT. OMS Oilfield Services
Jalan Mulawarman
RT 02 No 115
Balikpapan 76115
East Kalimantan, Indonesia
Tel: +62 542 770 082
Fax: +62 542 770 084
Email: balikpapan.admin@omsos.com

Brunei Darussalam

P.Y. Oiltools Sdn Bhd
Lot No. 84/85
Light Industrial Area
Sungai Bera, Anduki
Seria KB1933
Negara Brunei Darussalam
Tel: +673 3 228 530/1/2
Fax: +673 3 228 262
Email: pyoiltools@brunet.bn
Email: pyoiltools@omsos.com

Thailand (Songkhla)

OMS Oilfield Services (Thailand) Ltd
160/6 Moo 1
Tambol Huakao Amphur Singhanakorn
Songkhla 90280
Thailand
Tel: +66 74 332 293-4
Fax: +66 74 332 595
Email: thai.admin@omsos.com

Thailand (Sattahip)

OMS Oilfield Services (Thailand) Ltd
36/19 Moo.5
Tambol Phutalung
Amphur Sattahip
Chonburi 20180
Thailand
Tel : +6638 181 786-7
Fax : +6638 181 788
Email: sattahip.admin@omsos.com

Saudi Arabia

OMS Oilfield Services Arabia Ltd
4391 - 3rd Industrial City,
Unit Number: 1,
Dammam 34857 – 7362,
Kingdom of Saudi Arabia.
Tel: +966 13 568 0662
Email: saudi.admin@omsos.com

Malaysia (Kuala Lumpur)

OMS Oilfield Services Sdn Bhd
Unit No. 50-10-10, Level 10
Wisma UOA Damansara
50 Jalan Dungun
Damansara Heights
50490 Kuala Lumpur
Malaysia
Tel: +603 2094 8566
Fax: +603 2094 8670
E-mail: general.admin@omsos.com

Malaysia (Kemaman)

OMS Oilfield Services Sdn Bhd
OY1101 Open Yard, Phase 1,
Kemaman Supply Base
24007 Kemaman Terengganu
Malaysia
Tel: +609 863 1948
Fax: +609 863 1830
Email: kemaman.admin@omsos.com

Malaysia (Labuan)

OMS Oilfield Services Sdn Bhd
Ranca-Ranca Industrial Estate
PO Box 80823, 87018 Labuan FT
OMS Oilfield Services Sdn Bhd
Lot 8, Yard 52, Asian Supply Base,
Ranca-Ranca Industrial Estate,
87017 Labuan Malaysia
Tel: +608 741 3923
Fax: +608 741 6281
Email: labuan.admin@omsos.com

Malaysia (Johor)

OMS Oilfield Services Sdn Bhd
PLO 31, Jalan Teknologi 2
Taman Teknologi Johor
81400 Senai, Johor Bahru
Malaysia
Tel: +607 598 9161
Fax: +607 598 9164
Email: johor.admin@omsos.com

